

**DEPARTMENT OF HEALTH
NURSING CARE QUALITY ASSURANCE COMMISSION**

WHPS Procedure Summary 2.01: Admission Types

This procedure describes how nurses enter WHPS.

SUMMARY

Nurses may enter WHPS as follows:

1. Voluntary Self-referral

- A. When contacted directly by the nurse, employer or other third party, WHPS provides the opportunity for the nurse to enter the intake process.
- B. Nurses requesting admission to WHPS who do not have an open complaint with the NCQAC will be admitted as “voluntary,” and their participation will not be disclosed to the NCQAC.
- C. Voluntary self-referrals whom WHPS believes are a clear and present danger to patients, have pending criminal action or prior felony, have been terminated from another Alternative to Discipline Program, do not follow through with recommended program entry, or fail to comply with their program participation contract will be referred to the NCQAC.

2. Non-Disciplinary Referral

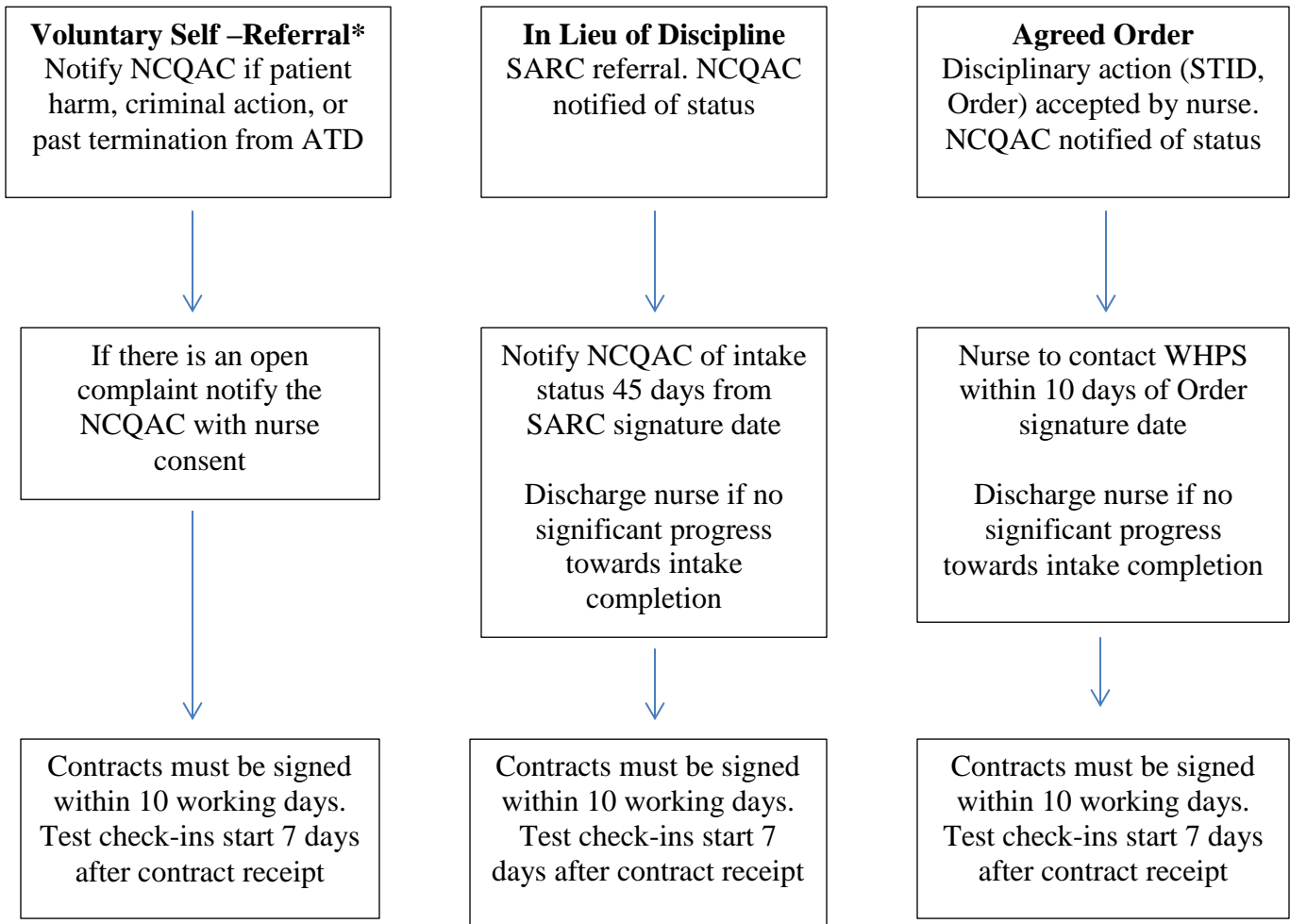
- A. Nurses who have open complaints may be provided the opportunity to enter WHPS as an alternative to license discipline. This agreement is made between the nurse and the NCQAC and requires the nurse to sign a Substance Abuse Referral Contract (SARC)..

3. Discipline Orders

- A. Discipline types referred to WHPS:
 - Agreement to Practice Under Conditions (APUC)
 - Stipulation to Informal Disposition (STID)
 - Agreed Order
- B. At the conclusion of the intake process (may be time limited by order), WHPS will notify the NCQAC and/or legal services by letter regarding case status.

WHPS Procedure 2.01 Admission Types

Process Chart



* Most nurses who voluntarily report to WHPS are encouraged to do so by their employer after discovery of diverting or are impaired on the job. If the nurse is deemed a clear and present danger to the public and/or does not follow through with the intake process the employer will be informed and directed to file a complaint with the NCQAC.